

2020

# *Fabric Blinds*

---


H O R I Z O N T A L F A B R I C B L I N D S



PRODUCT GUIDE



## TABLE OF CONTENTS

Features and Lift Systems	1
Colors and Tones	2
Color Coordination Chart	4
Product Specifications	5
Child Safety Information	6
Valance Options	7
The Deluxe  series	8
Schematic Diagram	9
Light Filtering Fabrics Pricing	11
Room Darkening Fabrics Pricing	13
Measuring	15
The Importance of Ordering Correctly from the Manufacturer	18
Manual Order Form	19
The Manufacturer's Terms and Conditions	20
Warranty Information	21

# FEATURES AND LIFT SYSTEMS



Enjoy the look and feel of fabric with the functionality of typical blinds.



Made of durable polyester fabric with a patented finishing coat that repels dust and liquids, ideal for high humidity areas.



Fabric blinds provide effective sound dampening features, light filtration, and UV Light Blockage

Lightweight makes them easy to install and operate.

Impressive color palette and patterns available.

Cleaning and care is simple with just a light duster.

## Standard Blind Features

- High Profile Headrail
- Regular Pull Cord & Cord Tilt Controls
- Safety Breakaway Tassel
- Standard 2¾” Dover (PVC) Valance / Fabric Insert
- Optional 3⅜” Westminster (Wood) Valance

## EZ Lift Blind Features

- ⅜” Tape Color Coordination Chart
- High Profile Headrail
- Continuous Cord-Loop
- Standard 2¾” Dover (PVC) Valance / Fabric Insert
- Optional 3⅜” Westminster (Wood) Valance

## Aurora (Routeless Blind) Features

- Low Profile Headrail
- Regular Pull Cord & Cord Tilt Controls
- Safety Breakaway Tassel
- Standard 2¾” Dover (PVC) Valance / Fabric Insert
- Optional 3⅜” Westminster (Wood) Valance

## Cordless Blind Features

- Low Profile Headrail
- Tilt: Cord or Wand
- Standard 2¾” Dover (PVC) Valance / Fabric Insert
- Optional 3⅜” Westminster (Wood) Valance

## Size Considerations for all Blinds

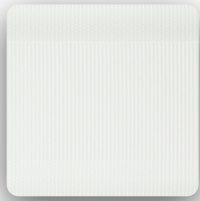
Minimum Blind Width	
Cordless	19.5” Wand Tilt   19.5” Cord Tilt
EZ Lift	9.5”
Aurora / Routeless / Standard	10”
Maximum Single Blind Width	
Maximum Width: Multiple Blinds on One Headrail	107” oversizes up to 120” (Special Quote)
Minimum Blind Height	18”
Maximum Blind Height	120”

# COLORS SOLID, WOOD AND DUO TONES

50mm = 2" SLATS | 65mm = 2.5" SLATS

D = ROOM DARKENING SLATS - COLOR SUFFIX

2" SOLID TONE



WHITE  
50100 / 50100D



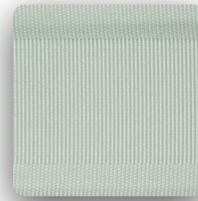
OFF WHITE  
50113 / 50113D



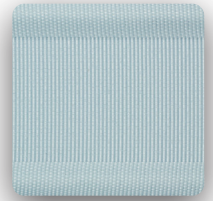
VANILLA  
50125 / 50125D



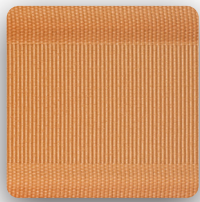
PEACH  
50206



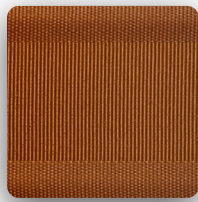
GREY  
50823



PROVIDENCE BLUE  
50627



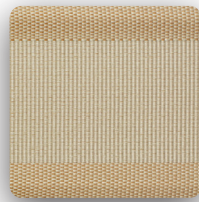
PRALINE  
50357



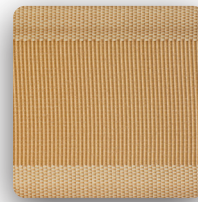
PECAN  
50334 / 50334D



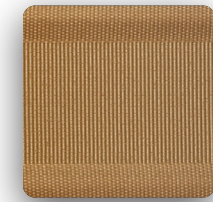
SAND  
50031 / 50031D



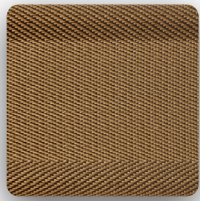
SESAME  
50302 / 50302D



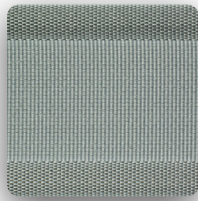
OAK  
50446



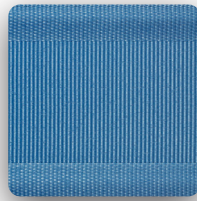
TEAK  
50370 / 50370D



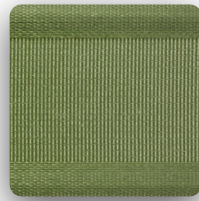
CHESTNUT  
50017 / 50017D



SLATE  
50016 / 50016D



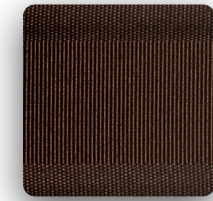
BLUEBERRY  
50029 / 50029D



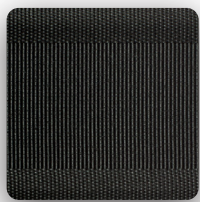
MOSS  
50504



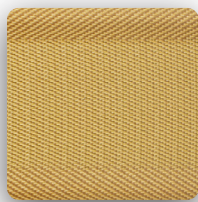
COUNTRY REDWOOD  
50295 / 50295D



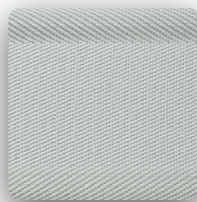
COCOA  
50378 / 50378D



BLACK  
50897

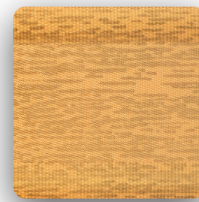


GOLD  
50320D

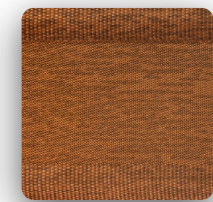


SILVER  
50822D

2" WOOD TONE

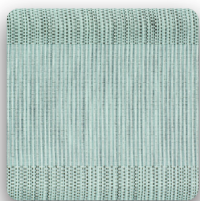


MAPLE  
50430-1

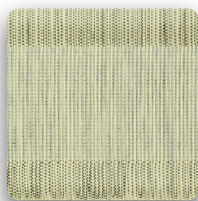


PECAN  
50334-1

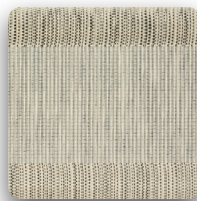
2" DUO TONE



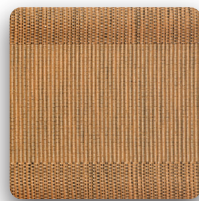
BLUE ICE / BLACK  
50601J897



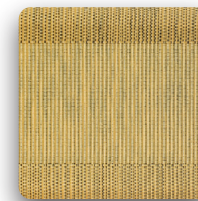
CANARY / BLACK  
50417J897



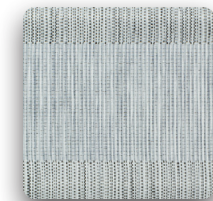
PEACH / BLACK  
50206J897



PRALINE / BLACK  
50357J897



WHEAT / BLACK  
50430J897



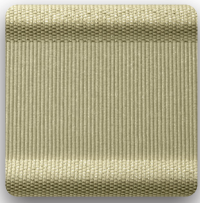
BLACK / WHITE  
50100J897

# COLORS METALLIC, ACID WASH, NOIR AND SOLID TONES

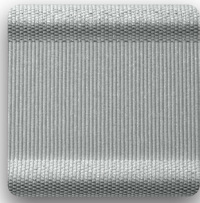
50mm = 2" SLATS | 65mm = 2.5" SLATS

D = ROOM DARKENING SLATS - COLOR SUFFIX

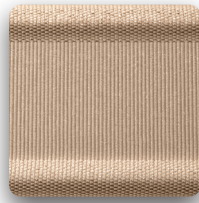
2" METALLIC TONE



LUXURY GOLD  
50902

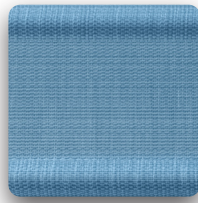


MOON SILVER  
50901

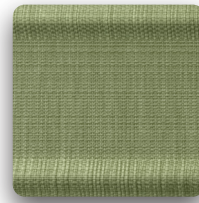


ROSE GOLD  
50903

2" ACID WASH TONE



DUSK BLUE  
50023



ASPEN GREEN  
50515



CRUSHED BERRY  
50349

2" NOIR TONE



BELUGA  
50376



CUB  
50375



OLIVE  
50433

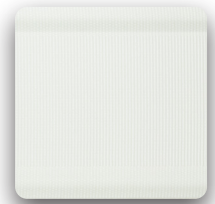


TURBULENCE  
50895

2.5" SOLID TONE



WHITE  
65100 / 65100D



OFF WHITE  
65113 / 65113D



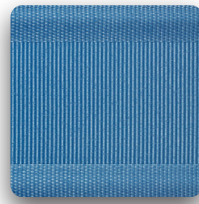
VANILLA  
65125 / 65125D



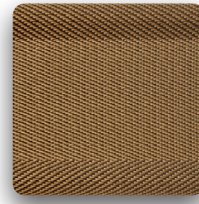
PEACH  
65206



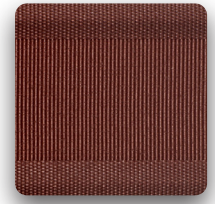
GREY  
65823



BLUEBERRY  
65029D



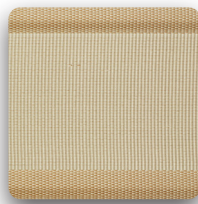
CHESTNUT  
65017D



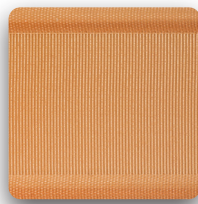
COUNTRY REDWOOD  
65295D



SAND  
65031 / 65031D



SESAME  
65302 / 65302D



PRALINE  
65357



WILLOW  
65517



TEAK  
65370 / 65370D



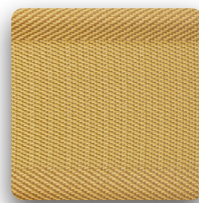
PECAN  
65334 / 65334D



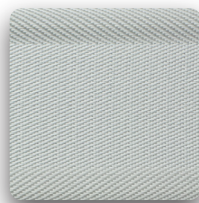
SURF  
65613



COCOA  
65378 / 65378D



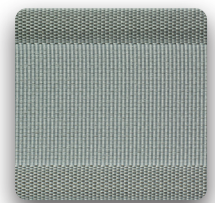
GOLD  
65320D



SILVER  
65822D



BLACK  
65897



SLATE  
65016D

# CLOTH TAPE COLOR COORDINATION CHART

2" Solid Tone Slats		Light Filtering / Room Darkening	
Slat Color Name	Color #	Suggested Cloth Tape Color	
White	50100 / D	B113	Winter White
Winter White	50113 / D	B113	Winter White
Vanilla	50125 / D	125	Linen
Peach	50206	206	Blossom
Grey	50823	B823	Granite
Providence Blue	50627	B627	Waterfall
Praline	50357	L357	Coral
Pecan	50334 / D	B334	Sienna
Sand	50031 / D	B322	Lemongrass
Sesame	50302	B302	Stone
	50302D	B302	Blush
Oak	50446	B302	Blossom
Teak	50370 / D	370	Teak
Slate	50016 / D	B822	Silver
Blueberry	50029 / D	B029	Blueberry
Chestnut	50017 / D	370	Teak
Country Redwood	50295 / D	295	Mahogany
Moss	50504	B504	Pine
Cocoa	50378 / D	B378	Java
Black	50897	B897	Onyx
Silver	50822D	B823	Granite
Gold	50320D	B430	Caramel
Cub	50375	370	Teak
Turbulence	50895	B822-897	Silver-Onyx
Beluga	50376	B822-897	Silver-Onyx
Olive	50433	370	Teak
Crushedberry	50349	295	Mahogany
Aspen Green	50515	B504	Pine
Dusk Blue	50023	B627	Waterfall
Rose Gold	50903	206	Blossom
Moon Silver	50901	B823	Granite
Luxury Gold	50902	B322	Lemongrass

2" Dual Tone Slats		Light Filtering	
Slat Color Name	Color #	Suggested Cloth Tape Color	
Frost	50601J897	B613	Marine Tile
Spring Shower	50100J897	B822	Silver
Weathered	50206J897	L97	Blush
Lantern	50417J897	B322	Lemongrass
Harvest	50430J897	B323	Maize
Copper	50357J897	L357	Coral

2" Wood Tone Slats		Light Filtering	
Slat Color Name	Color #	Suggested Cloth Tape Color	
Pecan	50334-1	B334	Sienna
Maple	50430-1	B430	Caramel

2.5" Solid Tone Slats		Light Filtering	
Slat Color Name	Color #	Suggested Cloth Tape Color	
White	65100	B113	Winter White
Winter White	65113	B113	Winter White
Vanilla	65125	125	Linen
Peach	65206	206	Blossom
Grey	65823	B823	Granite
Sand	65031	125	Linen
Praline	65357	L357	Coral
Sesame	65302	206	Blossom
Willow	65517	517	Willow
Teak	65370	370	Teak
Pecan	65334	B334	Sienna
Surf	65613	B627	Waterfall
Cocoa	65378	B378	Java
Black	65897	B897	Onyx

All Cloth Tape Available for 2" & 2.5" Slats				
2"	Cloth Tape Color Name	2.5"	Cloth Tape Color Name	
B100	Bright White	295	Mahogany	
B113	Winter White	B334	Sienna	
125	Linen	L357	Coral	
206	Blossom	370	Teak	
B823	Granite	B378	Java	
B627	Waterfall	B430	Caramel	
L357	Coral	B504	Pine	
B334	Sienna	B627	Waterfall	
B322	Lemongrass	B822	Silver	
B302	Stone	B823	Granite	
L97	Blush	B897	Onyx	
370	Teak	B029	Blueberry	
B822	Silver	B302	Stone	
B029	Blueberry	517	Willow	
370	Teak			
295	Mahogany			
B504	Pine			
B378	Java			
B897	Onyx			
B430	Caramel			
B613	Marine Tile			
B323	Maize			
B822-897	Silver-Onyx			
125	Linen			
206	Blossom			

# PRODUCT SPECIFICATIONS

## Options

### CORDLESS / EZ LIFT / AURORA (ROUTELESS) / STANDARD

#### Specifications:

#### Options:

Cordless Headrail Dimensions	2" W x 1.5" H
EZ Lift, Standard, Aurora, and Routeless Headrail Dimensions	2" W x 2"H
Bottom Rail Dimensions	2" Rectangular Oval
Valance - Dover (PVC)	2¾" Valance with Fabric Insert
Valance - Westminster (Wood)	3¾" Valance
Valance Returns	(OB) or by Request - No Charge
IB Mount Depth	1" Minimal

### Horizontal Stacking Chart

Blind Height	2" Blind Stack Height	2.5" Blind Stack Height
24"	4.0"	3.7"
36"	4.7"	4.3"
48"	5.4"	4.9"
60"	6.0"	5.4"
72"	6.8"	6.0"
84"	7.4"	6.6"
96"	8.1"	7.0"
108"	8.9"	7.6"
120"	9.5"	8.2"

**INCLUDES HEADRAIL AND BOTTOM RAIL**

### Optional Charges:

### NET SURCHARGE

Multiple Blinds on One Headrail	2 Blinds Per Headrail	\$ 25
Blind Cut Outs	Side Cuts	\$ 15
Blinds Under 15" In Width		\$ 15
Striping or Multi Slats Per Blind	Each Additional Color	\$ 25

### Replacement Parts:

### NET SURCHARGE

### Replacement Parts:

### NET SURCHARGE

2" Brackets	\$ 10 - Per Pair	Hold Down Brackets	\$ 8 - Per Pair
Center Support Bracket	\$ 3 - Each	Spacer Blocks	\$ 6 - Per Pair
Cord Tensioner	\$ 7.50 - Each	Valance Clips	\$ 3 - Each
Screws Per Pack of 4	\$ 3 - Per Pack	Restraining Kit	\$ 20 - Each
Dover Valance with Insert	\$ 3 - Per Foot	Westminster Valance	\$ 6 - Per Foot

### When Ordering Multi-Color or Striping Blinds, Please Specify:

- Colors for the headrail and the bottom rail.
- Numbers of colors required.
- Total number of slats required for each color.
- Slat colors counting from top until the bottom.
- Color for the ladder and cords.
- Color for the valance insert.

NOTE: The headrail, bottom rail, and bracket color may not match to the slat's materials.  
Minimum \$10 order plus freight.

# CHILD SAFETY INFORMATION

The Manufacturer has committed to join the Window Covering Manufacturers Association's new safety standards in the efforts to prevent accidents involving children and pets with accessible cords and by offering other product options that are child-safe custom window coverings.

Window Covering Manufacturers Association (WCMA) announced the industry's first third-party certification program designed to help consumers and retailers identify window covering products that are best suited for use in homes with young children. To be part of the new Best for Kids program, products are submitted to a WCMA-recognized third party testing laboratory where the products are required to and must meet stringent criteria. Once the products meet these criteria, they are "Certified Best For Kids". The Manufacturer has a number of products "Certified Best For Kids".



That's why the window coverings industry uses warning tags, warning labels, and other methods to communicate the potential hazards of corded window coverings. The warning label shown below, for example, communicates the important message about cords being a potential strangulation hazard and suggests choosing cordless alternatives or products with inaccessible cords. Blinds and shades that are improperly installed or out of safety compliance can pose a potential strangulation hazard to young children. According to the U.S. Consumer Product Safety Commission, corded window coverings are among the top hidden hazards in American homes.

## The Manufacturer Is Committed to Child Safety regarding Window Coverings



**WARNING**  
**ADVERTENCIA**



### Window Blind Cord Can STRANGLE Your Child.

Keep cords out of children's reach. Shorten cords to prevent reach.  
Move crib and furniture away - Children can climb furniture to reach cords.

### La cuerda de la persiana puede ESTRANGULAR a su niño.

Mantenga las cuerdas fuera del alcance de los niños. Acorte las cuerdas para evitar el alcance.  
Mueva la cuna y los muebles - Los niños pueden subir los muebles para alcanzar las cuerdas.

To learn more about the Window Covering Safety Council's efforts to protect children from potential cord hazards, visit their site at <https://windowcoverings.org>.



# VALANCE OPTIONS



THE **WESTMINSTER** VALANCE

Wood Valance/Bottom-Rail Options

- |                  |                |                     |                        |                       |                |                      |                          |                        |                |
|------------------|----------------|---------------------|------------------------|-----------------------|----------------|----------------------|--------------------------|------------------------|----------------|
| BW1124<br>Blanco | BW2910<br>Bone | BW206<br>Smoky Grey | BW1107<br>Slat Natural | BW1109<br>Sugar Maple | BW1112<br>Mink | BW202<br>Cherry Wood | BW1121<br>Toasted Walnut | BW205<br>Dark Mahogany | BW1125<br>Kona |
|------------------|----------------|---------------------|------------------------|-----------------------|----------------|----------------------|--------------------------|------------------------|----------------|

\*DOVER VALANCE IS THE STANDARD OPTION WITH YOUR ORDER

THE **DOVER** VALANCE

- |                 |                |               |                |              |                |
|-----------------|----------------|---------------|----------------|--------------|----------------|
| PV100<br>Blanco | PV125<br>Cream | PV031<br>Dune | PV320<br>Camel | PV016<br>Ash | PV378<br>Mocha |
|-----------------|----------------|---------------|----------------|--------------|----------------|



PVC Valance Options

# the DELUXE series

## TECHNOLOGY THAT ENHANCES YOUR LIVING SPACE

### RECHARGEABLE MOTORIZED / CONTROL WAND

- Easy Installation with no Hard Wiring
- Long Lasting Lithium Ion Battery
- Simple UP/DOWN/STOP Control Buttons
- Micro USB for Charging the Battery

WANDS	NET COST
Replacement Wand	\$35
CHARGING BRICK / USB CABLE	
Charging Brick	\$20
Micro USB Cable - 3'	\$8
Micro USB Cable - 6'	\$12
Micro USB Cable - 10'	\$16



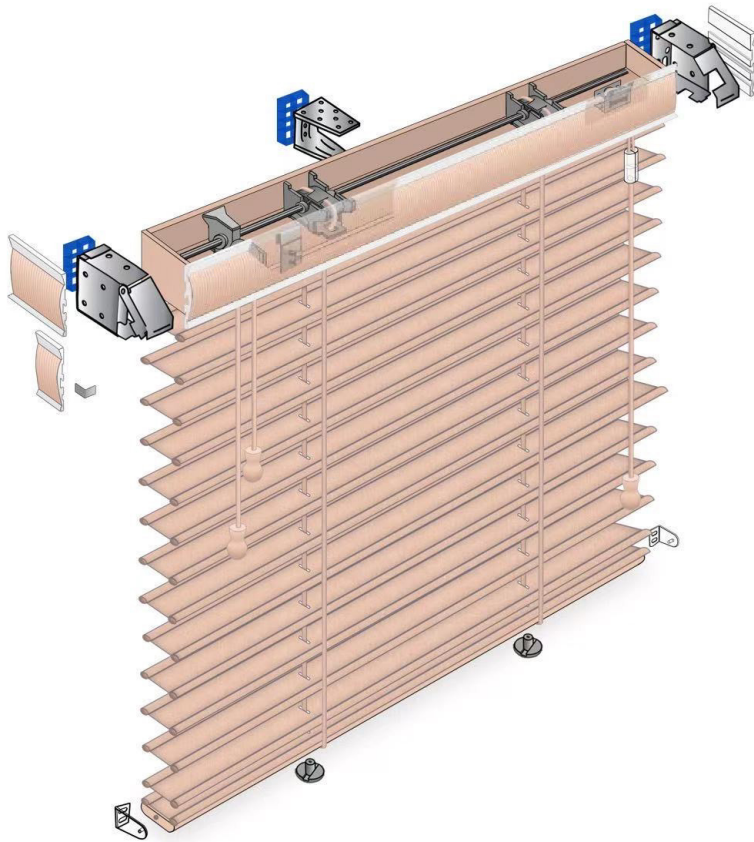
Single Channel

### REMOTE CONTROL - OPTIONAL

- Radio Remote
- Control your Product with a Single Channel or Multi-Channel Remote from up to 100 Feet *up to 20 shades per channel.*
- Remote Attaches to the Backplate Via Magnets, Just Attach the Backplate in a Convenient Place
- No Pull Cords Mean This is the Best Product for Child and Pet Safety
- Modern and Sleek Design Fits All Types of Decor

REMOTE	NET COST
Single Channel	\$20
Multi-Channel	\$30

# SCHEMATIC DIAGRAM

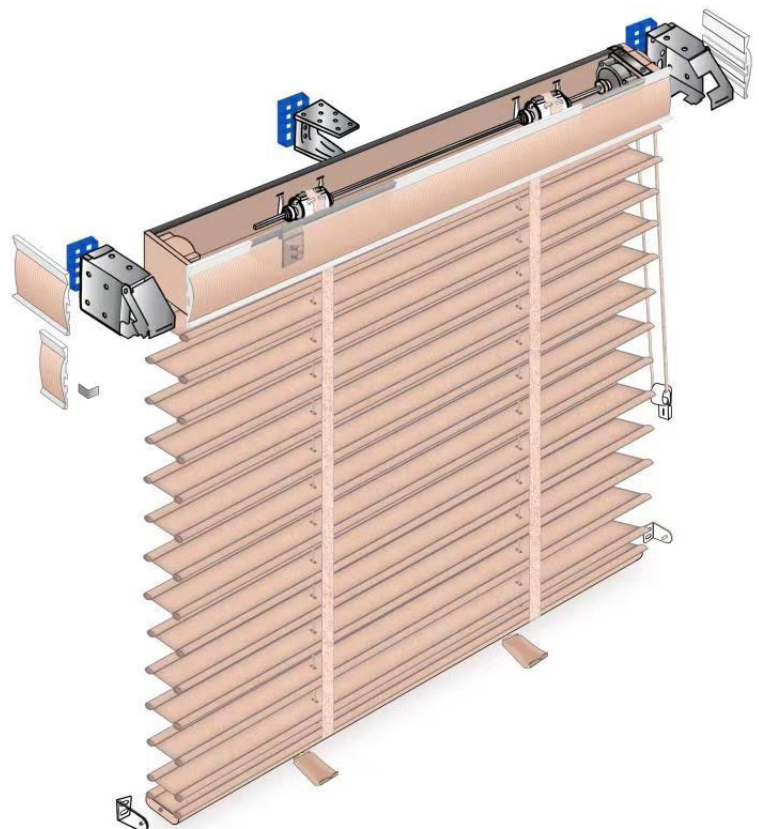


## ← STANDARD SYSTEM

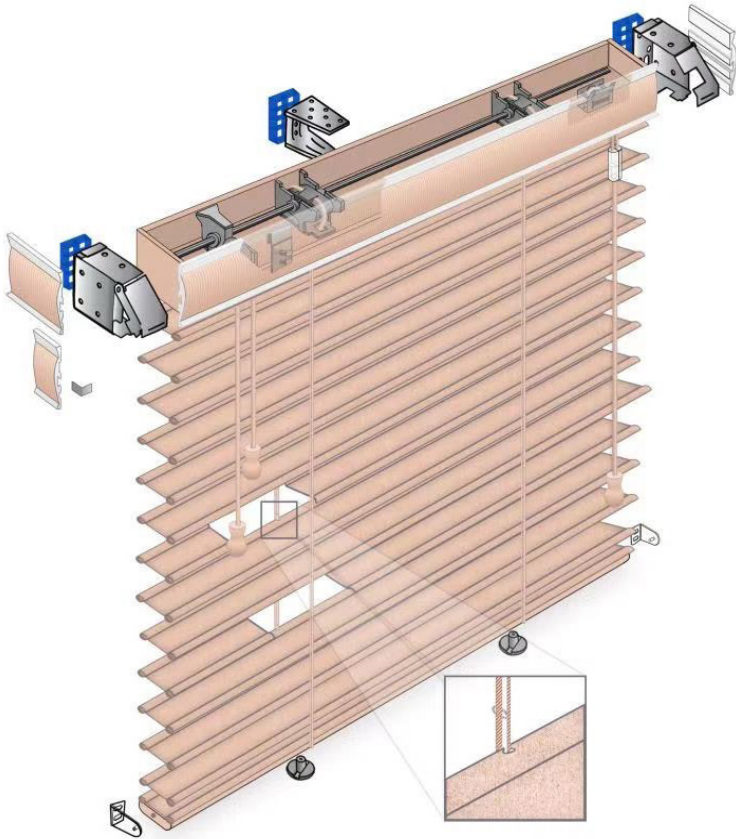
Made from a durable polyester fabric these are lightweight and easy to lift and tilt with standard pull cords and breakaway tassels.

## EZ LIFT SYSTEM →

This Continuous Cord Loop lift system offers ease of use and is ideal for larger size windows. Once secured the cord opens, closes, lifts and lowers the blind.



# SCHEMATIC DIAGRAM

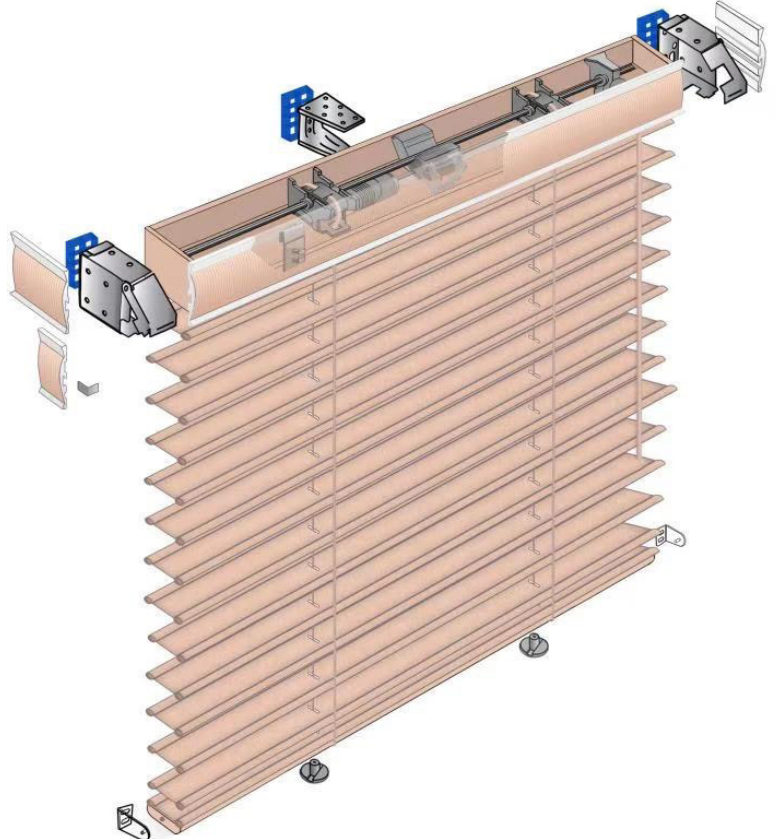


## ← AURORA (ROUTELESS) SYSTEM

This routeless product makes replacing slats easy and provides privacy when fully closed. Operating with standard cords and breakaway tassels.

## CORDLESS SYSTEM →

Cordless blinds are absolutely best for kids and pets having no cords. They raise and lower with just simply lifting and pulling down the bottom rail. Tilt function is operated with a wand.



# LIGHT FILTERING FABRICS

SUGGESTED RETAIL PRICE

NOTE: Cord lengths are based on standards. You have the option of choosing a longer cord.

## 2" Standard Blind

Height Up To	Width Up To														Cord Length
	24"	32"	36"	42"	48"	54"	60"	66"	72"	78"	84"	90"	96"	107"	
36"	191	213	240	271	307	347	391	444	507	578	658	747	858	1302	15"
42"	213	236	262	293	329	369	413	467	529	600	680	769	880	1324	15"
48"	236	258	284	316	351	391	436	489	551	622	702	791	902	1347	20"
54"	258	280	307	338	373	413	458	511	573	644	724	813	924	1369	20"
60"	280	302	329	360	396	436	480	533	596	667	747	836	947	1391	20"
66"	302	324	351	382	418	458	502	556	618	689	769	858	969	1413	20"
72"	324	347	373	404	440	480	524	578	640	711	791	880	991	1436	24"
78"	347	369	396	427	462	502	547	600	662	733	813	902	1013	1458	24"
84"	369	391	418	449	484	524	569	622	684	756	836	924	1036	1480	24"
90"	391	422	458	498	542	591	644	702	769	844	929	1022	1138	1627	24"
96"	413	444	480	520	564	613	667	724	791	867	951	1044	1160	1649	29"
102"	436	467	502	542	587	636	689	747	813	889	973	1067	1182	1671	29"
108"	458	502	551	604	662	724	791	862	942	1031	1129	1236	1364	1867	29"
114"	480	524	573	627	684	747	813	884	964	1053	1151	1258	1387	1889	34"
120"	502	569	640	716	796	880	969	1062	1164	1276	2284	2413	2564	3089	48"

## Valances Retail Surcharges

Dover Valance	NO CHARGE													
Westminster Valance	55	65	75	85	95	105	115	125	135	145	170	195	220	245

## Systems Upgrade Retail Surcharges

<b>Aurora Routeless System:</b> \$150
<b>EZ Lift System with Continuous Cord:</b> \$150
<b>Cordless system:</b> \$120
<b>Motorization includes Wand:</b> \$ 450
<b>Motorization using Remote:</b> \$ 550
<b>Single Channel Radio Remote Control:</b> \$ 75
<b>Multi-Channels Radio Remote Control:</b> \$ 120
<b>USB 6' Cable with Charger:</b> \$38

# LIGHT FILTERING FABRICS

SUGGESTED RETAIL PRICE

NOTE: Cord lengths are based on standards. You have the option of choosing a longer cord.

## 2.5" Standard Blind

Height Up To	Width Up To														Cord Length
	24"	32"	36"	42"	48"	54"	60"	66"	72"	78"	84"	90"	96"	107"	
36"	220	242	269	300	335	375	420	473	535	606	686	775	886	1331	15"
42"	245	268	294	325	361	401	445	499	561	632	712	801	912	1356	15"
48"	271	293	320	351	386	426	471	524	586	658	738	826	938	1382	20"
54"	296	319	345	376	412	452	496	550	612	683	763	852	963	1408	20"
60"	322	344	371	402	438	478	522	575	638	709	789	878	989	1433	20"
66"	348	370	396	428	463	503	548	601	663	734	814	903	1014	1459	20"
72"	373	395	422	453	489	529	573	626	689	760	840	929	1040	1484	24"
78"	399	421	448	479	514	554	599	652	714	785	865	954	1065	1510	24"
84"	424	446	473	504	540	580	624	678	740	811	891	980	1091	1535	24"
90"	450	481	516	556	601	650	703	761	828	903	988	1081	1196	1685	24"
96"	475	506	542	582	626	675	729	786	853	929	1013	1106	1222	1711	29"
102"	501	532	568	608	652	701	754	812	879	954	1039	1132	1248	1736	29"
108"	526	571	620	673	731	793	860	931	1011	1100	1198	1304	1433	1935	29"
114"	552	596	645	699	756	819	885	956	1036	1125	1223	1330	1459	1961	34"
120"	578	644	715	791	871	955	1044	1138	1240	1351	2360	2489	2640	3164	48"

## Valances Retail Surcharges

Dover Valance	NO CHARGE														
Westminster Valance	55	65	75	85	95	105	115	125	135	145	170	195	220	245	

## Systems Upgrade Retail Surcharges

<b>Aurora Routeless System:</b> \$150
<b>EZ Lift System with Continuous Cord:</b> \$150
<b>Cordless system:</b> \$120
<b>Motorization includes Wand:</b> \$ 450
<b>Motorization using Remote:</b> \$ 550
<b>Single Channel Radio Remote Control:</b> \$ 75
<b>Multi-Channels Radio Remote Control:</b> \$ 120
<b>USB 6' Cable with Charger:</b> \$38

# ROOM DARKENING FABRICS

SUGGESTED RETAIL PRICE

NOTE: Cord lengths are based on standards. You have the option of choosing a longer cord.

## 2" Standard Blind

Height Up To	Width Up To														Cord Length
	24"	32"	36"	42"	48"	54"	60"	66"	72"	78"	84"	90"	96"	107"	
36"	220	245	276	312	353	399	450	511	583	664	756	859	986	1498	15"
42"	245	271	302	337	378	424	475	537	608	690	782	884	1012	1523	15"
48"	271	296	327	363	404	450	501	562	634	716	808	910	1038	1549	20"
54"	296	322	353	388	429	475	526	588	659	741	833	935	1063	1574	20"
60"	322	348	378	414	455	501	552	613	685	767	859	961	1089	1600	20"
66"	348	373	404	440	480	526	578	639	710	792	884	986	1114	1625	20"
72"	373	399	429	465	506	552	603	664	736	818	910	1012	1140	1651	24"
78"	399	424	455	491	532	578	629	690	762	843	935	1038	1165	1676	24"
84"	424	450	480	516	557	603	654	716	787	869	961	1063	1191	1702	24"
90"	450	486	526	572	624	680	741	808	884	971	1068	1176	1308	1871	24"
96"	475	511	552	598	649	705	767	833	910	997	1094	1201	1334	1896	29"
102"	501	537	578	624	675	731	792	859	935	1022	1119	1227	1360	1922	29"
108"	526	578	634	695	762	833	910	992	1084	1186	1298	1421	1569	2147	29"
114"	552	603	659	721	787	859	935	1017	1109	1211	1324	1446	1595	2172	34"
120"	578	654	736	823	915	1012	1114	1222	1339	1467	2627	2775	2949	3552	48"

## Valances Retail Surcharges

Dover Valance	NO CHARGE														
Westminster Valance	55	65	75	85	95	105	115	125	135	145	170	195	220	245	

## Systems Upgrade Retail Surcharges

<b>Aurora Routeless System:</b> \$150
<b>EZ Lift System with Continuous Cord:</b> \$150
<b>Cordless system:</b> \$120
<b>Motorization includes Wand:</b> \$ 450
<b>Motorization using Remote:</b> \$ 550
<b>Single Channel Radio Remote Control:</b> \$ 75
<b>Multi-Channels Radio Remote Control:</b> \$ 120
<b>USB 6' Cable with Charger:</b> \$38

# ROOM DARKENING FABRICS

SUGGESTED RETAIL PRICE

NOTE: Cord lengths are based on standards. You have the option of choosing a longer cord.

## 2.5" Standard Blind

Height Up To	Width Up To														Cord Length
	24"	32"	36"	42"	48"	54"	60"	66"	72"	78"	84"	90"	96"	120"	
36"	253	278	309	345	386	432	483	544	616	697	789	892	1019	1531	15"
42"	282	308	338	374	415	461	512	573	645	727	819	921	1049	1560	15"
48"	312	337	368	404	444	490	542	603	674	756	848	950	1078	1589	20"
54"	341	366	397	433	474	520	571	632	704	786	878	980	1108	1619	20"
60"	370	396	427	462	503	549	600	662	733	815	907	1009	1137	1648	20"
66"	400	425	456	492	533	579	630	691	763	844	936	1039	1166	1677	20"
72"	429	455	485	521	562	608	659	720	792	874	966	1068	1196	1707	24"
78"	458	484	515	550	591	637	688	750	821	903	995	1097	1225	1736	24"
84"	488	513	544	580	621	667	718	779	851	933	1025	1127	1255	1766	24"
90"	517	553	594	640	691	747	809	875	952	1039	1136	1243	1376	1938	24"
96"	547	582	623	669	720	777	838	904	981	1068	1165	1272	1405	1968	29"
102"	576	612	653	699	750	806	867	934	1010	1097	1194	1302	1435	1997	29"
108"	605	657	713	774	841	912	989	1071	1163	1265	1377	1500	1648	2226	29"
114"	635	686	742	803	870	941	1018	1100	1192	1294	1407	1529	1677	2255	34"
120"	664	741	823	910	1002	1099	1201	1308	1426	1554	2714	2862	3036	3639	48"

## Valances Retail Surcharges

Dover Valance	NO CHARGE														
Westminster Valance	55	65	75	85	95	105	115	125	135	145	170	195	220	245	

## Systems Upgrade Retail Surcharges

<b>Aurora Routeless System:</b> \$150
<b>EZ Lift System with Continuous Cord:</b> \$150
<b>Cordless system:</b> \$120
<b>Motorization includes Wand:</b> \$ 450
<b>Motorization using Remote:</b> \$ 550
<b>Single Channel Radio Remote Control:</b> \$ 75
<b>Multi-Channels Radio Remote Control:</b> \$ 120
<b>USB 6' Cable with Charger:</b> \$38



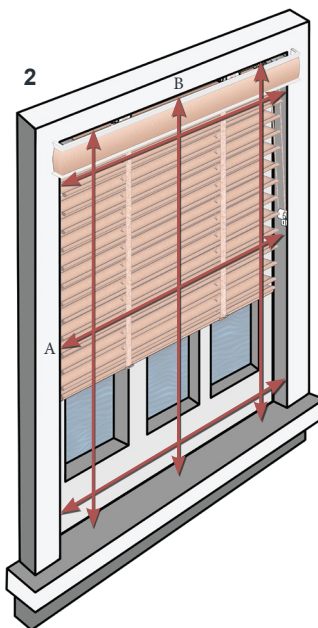
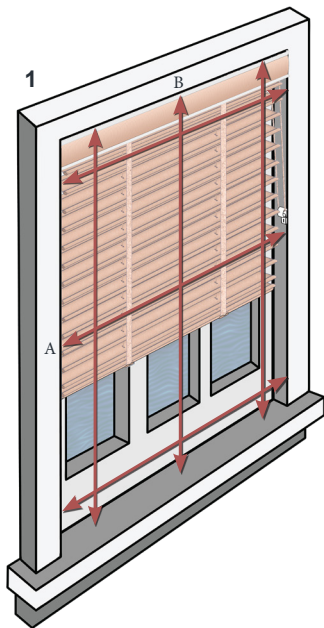
# MEASURING

## Standard Rectangular Windows

### Inside Mount (IB)

Measure exact width A and length B of the window opening as shown. The factory will deduct the necessary allowance off of the blind for clearance. Please mark (IB) as the inside mount. On all inside mounts, a small light gap may appear.

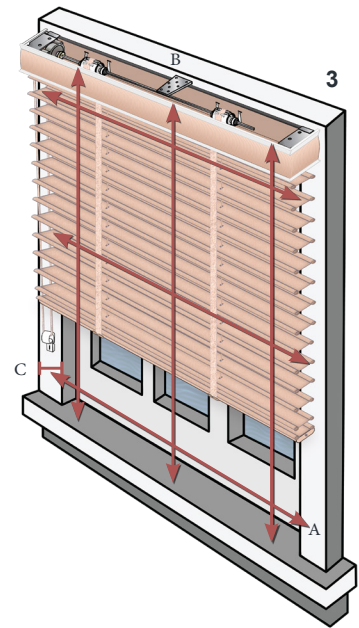
1. IB Mount with IB Valance
2. IB Mount with OB Valance



### Outside Mount (OB)

Measure exact width A and length B of the window opening you wish to cover. The blind should cover the window opening by at least 2 inches on both the width and length or to cover the sill C. Please mark (OB) as the outside mount.

3. OB Mount with OB Valance

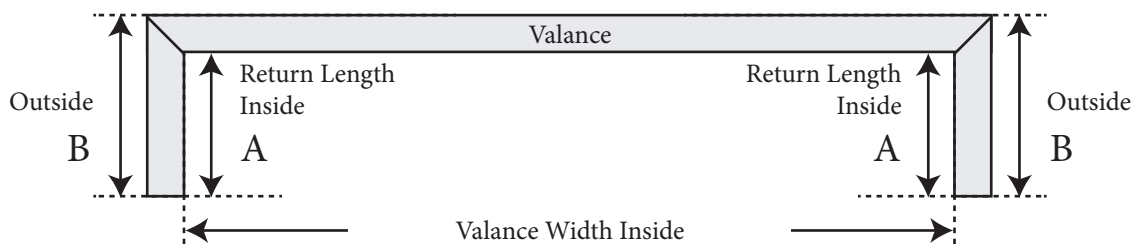


A valance is supplied with your order in one of the following styles, depending on how your blind will be mounted. For a more custom look, the valance and returns may be special ordered to confirm your measurements.

**NOTE:** Valances with returns are measured and cut from the INSIDE of the miter to ensure the most accurate fit when installed over the headrail or window frame.

**Blinds ordered as an OUTSIDE MOUNT will be supplied with returns** sized to cover the end of the blind back to the mounting surface. If projection brackets are requested when the blind is ordered, longer returns will be sent automatically. Outside mount blinds are available without returns upon request. Standard return depth is 2½”.

Top View - Outside Mount



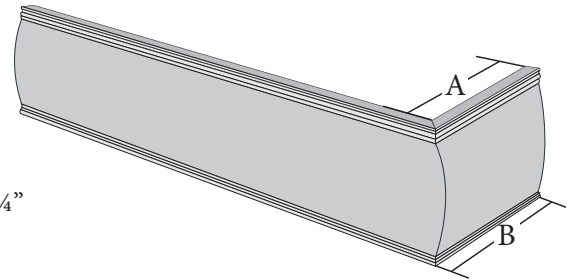
# MEASURING

## Valance Return Measuring and Ordering

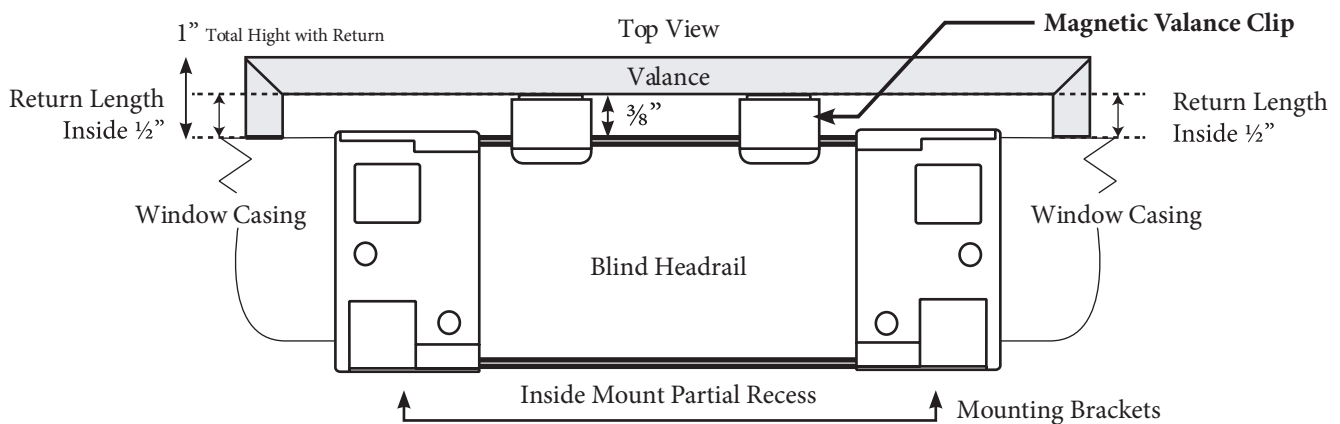
Blind Ordered as an **OUTSIDE MOUNT** with returns

**A: Inside Return Measurements** - 2 ¾" Standard

**B: Outside Return Measurements** - Include return measurement + ½" = 3 ¼"



Blind Ordered as an **INSIDE MOUNT** with **OB Valance** will be supplied with ½" returns with cord tilt, ¾" returns with Wand tilt or 2.5" slat sizes.



### Ordering Information:

Please state at the time of order if the valance and return measurement are for the **EXACT** size required so that no additions or deductions are made.

Different return sizes can be ordered for the same valance. Always provide **LEFT** return **INSIDE** measurements first when ordering.

- **Valance Returns** will have an adhesive strip to ensure a flush seam with the headrail Valance. All standard valance returns come with an "L" clip to support and hold a 90° angle of the Valance Return.
- **Bay and Corner Blind** – must specify return length on inside mount at the time of order.

### Valance and Return Specifications

**Custom Valance Widths** are available upon request. Maximum widths for valance are as follows:

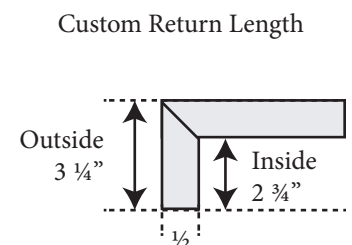
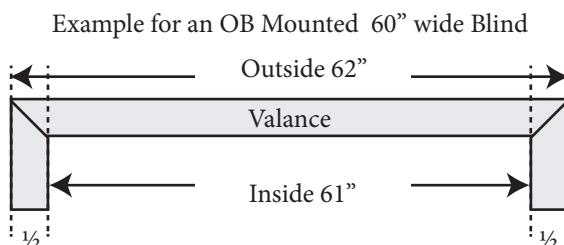
- The maximum continuous width is 110"
- Valance Width greater than 110" will be spliced into 2 sections.

**Custom Return Lengths** are available upon request.

- The minimum return length is ½"
- The maximum return length is 6"
- Add ½" to the valance for a comfortable fit

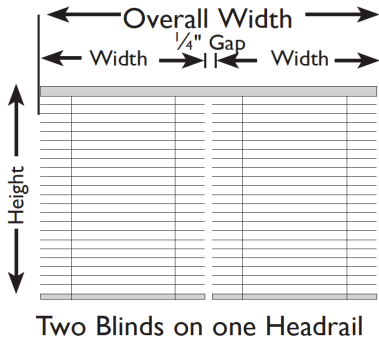
- 3 ¼" Return Lengths** are factory adjusted when extension brackets or (1 set of) spacer blocks are ordered.
- Short Extension Brackets = 4 ½"
  - Small Spacer Blocks (1st Set) = 3 ¼"
  - Long Extension Brackets = 6 ½"
  - Large Spacer Blocks (1st Set) = 3 ¾"

**NOTE:** Valances are cut to measure from the **inside** miter to ensure the most accurate fit when installed over the headrail or window frame.

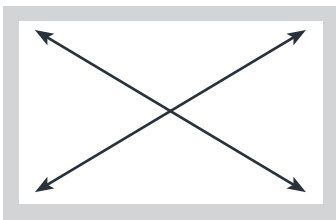


# MEASURING

## Multiple Blinds on One Headrail



Squareness:



Check for squareness, measure diagonal as shown. If the measurement differs over 1/2" your window isn't square. Outside mount is recommended.

Two blinds can be installed on a single headrail to provide a practical treatment for larger windows or sliding patio doors.

**Options:** Standard Controls

2 Blinds on One Headrail	Left Panel	Controls Left Blind
	Right Panel	Controls Right Blind

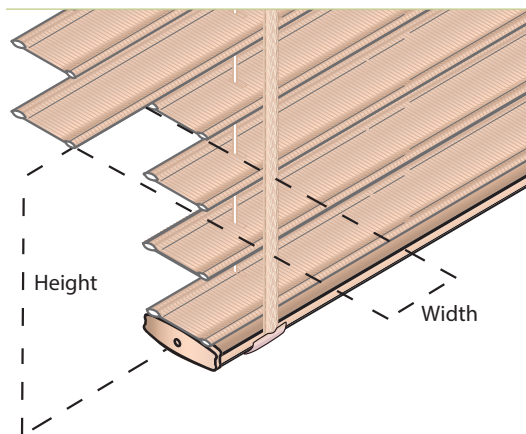
**Measuring:**

1. Measure overall width of the area to be covered. If space permits, an overlap of 1/2" per side is recommended for outside mounts.
2. Measure the width of the area each blind is to cover. Measure and specify the left blind first, continuing to the right. Allow a minimum of 1/4" between blinds for operating clearance.
3. Total width of all blinds, plus clearance(s) must equal overall width.
4. Measure height as follows:
  - a. For windows, use standard inside or outside measuring procedures.
  - b. For patio doors, measure height within 3/4" of floor, either from ceiling or a point at least 6 1/2" above the door frame.

**Ordering:**

1. Specify the total width of the headrail.
2. Indicate each panel width separately, specify left blind first, continuing to the right.
3. Specify control positions, if other than standard.
4. Add applicable surcharge

## Cut-Out Blinds



**Additional charge**

- Maximum cut-out is 1" before route hole or notch (corner and side cut-outs only).
- Cut-Outs are measured with the slats tilted in the closed position for maximum clearance.
- The cut-out height may be larger than requested due to slat placement.
- Measure height from the bottom of the blind up to the desired location of the cut-out.

# THE IMPORTANCE OF ORDERING CORRECTLY FROM THE MANUFACTURER

Placing your order correctly with the manufacturer can decrease the need for REMAKES, REFUNDS & RETURNS.

## Important Ordering Information:

- You must include ACCURATE measurements for the width and height (to the nearest 1/8") of the product
- You must specify IB or OB mounting required of the product
- You must include the color name, and color number
- You must include Position Control - RIGHT or LEFT

## Fabric Style & Color Selection:

Fabrics come in Light Filtering and Room Darkening. Choose from the collection. (Page 12,13)

Example Color Number: **50 100 D**

- |             |                        |
|-------------|------------------------|
| Fabric Size | • 2" - <b>50</b>       |
|             | • 2.5" - 65            |
| Color #     | • White - <b>100</b>   |
| Collection  | • Darkening - <b>D</b> |

## To Find Your Cost:

Height Up To	Width Up To					
	24"	32"	36"	42"	48"	54"
36"	184	208	235	251	266	302
42"	200	224	253	272	291	333
48"	211	241	271	294	314	362
54"	227	259	290	318	341	391
60"	243	274	310	<b>338</b>	367	423
66"	260	295	330	362	401	460
72"	281	310	348	385	431	495

REMAKES: We understand mistakes happen and typically your pre-negotiated Oops discount may apply.

REFUNDS: Refunds may be issued at the manufactures discretion.

RETURNS: Dealer must contact the manufacturer's directly to obtain a return authorization.

# ORDER FORM

Please make sure the information provided is **CORRECT**.

**NOTE:** IB: The factory will deduct 1/2" off the total width. OB: The factory will make the product to the exact measurements provided.

PLEASE EMAIL TO: [CustomerService@LantexUSA.com](mailto:CustomerService@LantexUSA.com)

BILL TO:	SHIP TO:	SAME AS BILL TO <input type="checkbox"/>
Company: _____	Company: _____	
Street: _____	Street: _____	
City: _____ State: _____ Zip: _____	City: _____ State: _____ Zip: _____	
Country: _____	Country: _____	
Telephone: _____ Fax: _____	Telephone: _____ Fax: _____	

P.O. NUMBER: \_\_\_\_\_



To order this product please contact Customer Service at [CustomerService@lantexusa.com](mailto:CustomerService@lantexusa.com) or call at 1.844.516.0996

**SIDE MARK:**

1	Qty.	IB/OB	Width	Height	2"		2.5"		Color #	Color Name	Tilt L/R	Lift L/R
					Cordless		Cordless					
					EZ Lift		EZ Lift					
					Aurora (Routeless)		Standard					
					Standard		Standard					
PVC Valance					Room Name:			Special Note:				
Westminster Valance					Window Name:							

2	Qty.	IB/OB	Width	Height	2"		2.5"		Color #	Color Name	Tilt L/R	Lift L/R
					Cordless		Cordless					
					EZ Lift		EZ Lift					
					Aurora (Routeless)		Standard					
					Standard		Standard					
PVC Valance					Room Name:			Special Note:				
Westminster Valance					Window Name:							

3	Qty.	IB/OB	Width	Height	2"		2.5"		Color #	Color Name	Tilt L/R	Lift L/R
					Cordless		Cordless					
					EZ Lift		EZ Lift					
					Aurora (Routeless)		Standard					
					Standard		Standard					
PVC Valance					Room Name:			Special Note:				
Westminster Valance					Window Name:							

4	Qty.	IB/OB	Width	Height	2"		2.5"		Color #	Color Name	Tilt L/R	Lift L/R
					Cordless		Cordless					
					EZ Lift		EZ Lift					
					Aurora (Routeless)		Standard					
					Standard		Standard					
PVC Valance					Room Name:			Special Note:				
Westminster Valance					Window Name:							

5	Qty.	IB/OB	Width	Height	2"		2.5"		Color #	Color Name	Tilt L/R	Lift L/R
					Cordless		Cordless					
					EZ Lift		EZ Lift					
					Aurora (Routeless)		Standard					
					Standard		Standard					
PVC Valance					Room Name:			Special Note:				
Westminster Valance					Window Name:							

# MANUFACTURER'S TERMS AND CONDITIONS

- Catalog prices (USD) and product specifications are subject to change without notice.
- Most terms are 30 days from shipment unless otherwise stated.
- A 1.5% per month service charge will be applied to all past due balances.
- All materials are subject to dye lot variations.
- Manufacturer will not assume responsibility for any color mismatch after subsequent orders.
- There is a \$40.00 charge for any returned checks.
- For any product the manufacturer performs warranty service on, transportation charges are not included in warranty.
- State Tax Exemption Certificates must be provided and on file for tax exempt sales production.
- There will be a 30% service charge for changes or cancellations made after production has started.
- Orders placed after 5:00 p.m. EST will be processed the following business day.
- The manufacturer is not responsible for printing or typographical errors within the catalogs, websites or other published information.
- Manufacturer currently ships with most major carriers.
- Following the WCMA National Safety Standards, all cords will be made 40% of the length of the product. The manufacturer suggests all cords to be permanently anchored to keep children and pets safe.
- Returns must have an RGA Number and be approved.
- Claims for merchandise shortages, damages or discrepancy must be made within 10 days of the receipt of goods.
- These Fabric Blinds are custom made and cannot be canceled once the order has been put into production.
- Manufacturer is not responsible for any misrepresentation by a dealer.
- Balances on open invoices are stated in US funds and should be paid in US funds.



# WARRANTY

This Limited Lifetime Warranty program is available to consumers who have purchased blinds and shades by (The Manufacturer). This applies to Fabric Horizontal Blinds, Sheer Shades, Roman Shades, Cellular Shades, Pleated Shades, and painted or stained valances.

## **What the Warranty Covers**

The manufactured product is warranted against original defects in materials, workmanship or failure to operate for as long as the **original** purchaser owns the product (unless shorter time periods are provided below) on the conditions that;

- The product was properly installed in a residential or commercial dwelling
- The product was made or assembled exclusively from Lantex USA, LLC. materials and components
- The Manufacturer recommendations were followed regarding limitations and specifications
- The Manufacturer componentry are covered for 5 years  
The Manufacturer motorized components are covered for 2 years

## **Who is Covered**

This warranty extends only the ORIGINAL purchaser of the above stated products.

The Manufacturer obligations to the Consumer are limited to the repair or replacement of parts or products found to be defective. The Manufacturer is not responsible for shipping charges or labor costs, for measuring and taking the product down or for remeasuring or reinstalling the product.

If repairs are made under this warranty, the repairs will be made with like or similar parts.

## **What the Warranty Does Not Cover**

This warranty does not cover conditions or damages caused by abuse, accidents, alterations, misuse, or failure to follow instructions for measurement, installation, use, cleaning, or maintenance. Normal wear and tear, including but not limited to the items or occurrences below, is not covered by the warranty:

- Batteries.
- Unfinished cornices.
- All fabrics can lose original intensity after long exposure to the sun. When left for extended periods in direct sunlight, plastics tend to yellow or crack. Some loss of color intensity or discoloration may occur in plastic materials or wood finishes.
- Colors may vary from lot to lot and may not exactly match samples of previous purchases.
- All cords will eventually wear out.

The Manufacturer considers these items or occurrences normal wear and tear, and they are not covered by this warranty. THIS WARRANTY IS EXCLUSIVE AND IN LIEU OF ALL OTHER WRITTEN OR ORAL WARRANTIES OR OBLIGATIONS AND LIABILITIES. No person is authorized to extend or alter this warranty. THE MANUFACTURER SHALL HAVE NO LIABILITY WHATSOEVER FOR INCIDENTAL OR CONSEQUENTIAL DAMAGES. Some states do not allow the exclusion or limitation of incidental or consequential damages, so this limitation or exclusion may not apply to you.

# Fabric Blinds

HORIZONTAL FABRIC BLINDS

